


In this tutorial, you will be creating clip art from a photo using Pixel Persona in Affinity Designer. You will learn how to use the Selection Brush Tool and how to refine your clip art.

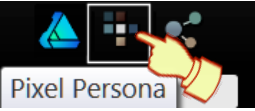

PHOTO TO CLIPART



LET'S GET STARTED

1. Download and unzip the **clipart.zip** file to your hard drive. It contains the **rose.jpg** image that will be used in this tutorial. If you wish, you may use an image of your choice.
2. Select **File\New** or **Ctrl+N** to create a new **800 x 800** px document with either a white or transparent background.
3. Select **File\Place** or click the **Place Image Tool**  on the toolbar. Locate the rose.jpg image, then click OK.
4. To place the image at its default size, click on the new document or click and drag on the document to set the size and position.

USING THE SELECTION BRUSH TOOL

1. Click the **Pixel Persona** icon  to display the **Pixel Persona** toolbar.
2. With your image active, click **Layer\Rasterise** or **right click** on your rose image in the **Layers** tab and click on **Rasterise**. The image will then change to a pixel layer.
3. Select the **Selection Brush Tool**  from the left **toolbar** or press **W** on your keyboard.
4. On the **Context toolbar**, select **Add**, Width **50px** and check **Snap to Edges**.



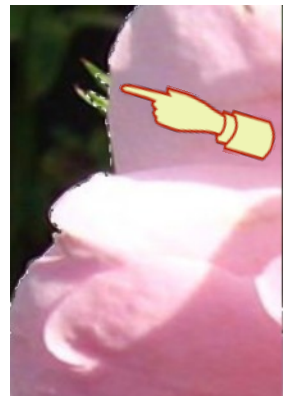
5. Using the **Selection Brush Tool**, click inside the rose, not too close to the edge.



6. Keep painting with the **Selection Brush Tool** (refer image 1) until you have the entire image selected (refer image 2).

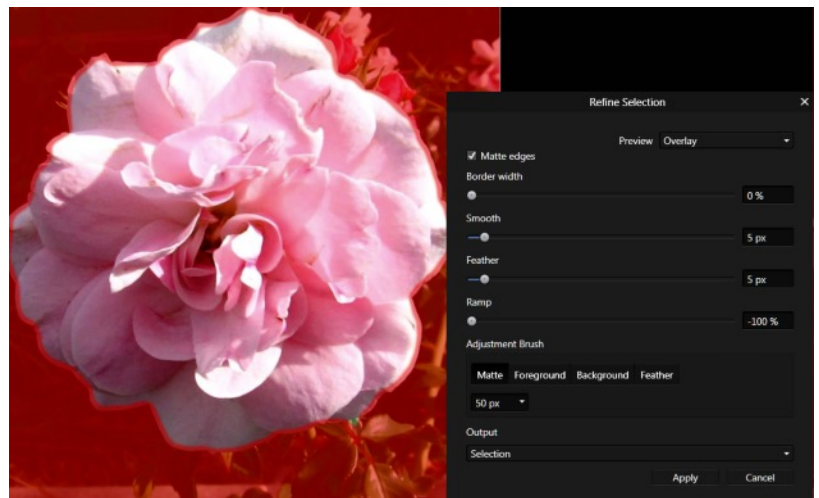


7. The **Selection Brush** has included several unwanted bits. On the **Context toolbar**, select **Subtract** and change the **Width** to about 10 or 20. It's easier to subtract small bits with a smaller brush.
8. Zoom in and remove any unwanted bits. If the brush removes too much just undo (CTRL+Z) and start again.
9. When you are happy with your image, select **Refine** on the **Context toolbar**. These settings will make your edges a lot smoother. Set the values as shown below:



- **Border Width: 0%** - Expands the selection by adjusting the width of its border.
- **Smooth: 5 px** - Determines the curvature of the selection's edge.
- **Feather: 5 px** - Determines the softness (opacity) of the transition at the edge of the selection.
- **Ramp: -100%** - Changes the size of the selection. Negative values will shrink the selection while positive values enlarge it.
- Click Apply.

These settings can be change to suit the image you are working with. It is trial and error.



10. Making sure the rose layer is highlighted in the **Layers** tab. Right click on the layer and select **Duplicate**.

Tip if you only see the selection you forgot to rasterize your image you can do it now.

11. In the **Layers** tab you will now have 2 layers. Uncheck the bottom layer to hide it. Now you can see your selected image. If you are happy with your image, **Select/Deselect** or (**Ctrl+ D**) on the menu.

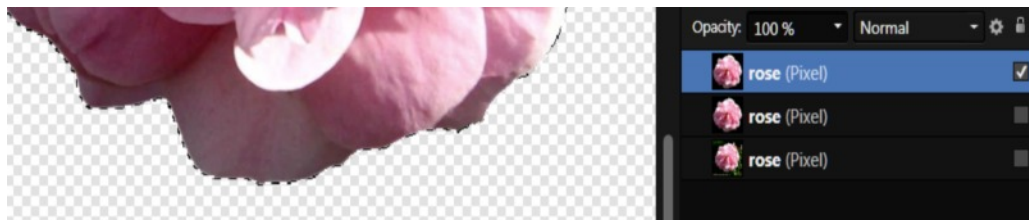
12. As you can see in the image below there are still a few bits of green.



To adjust this, go back and use the **Subtract** brush and remove the green bit.



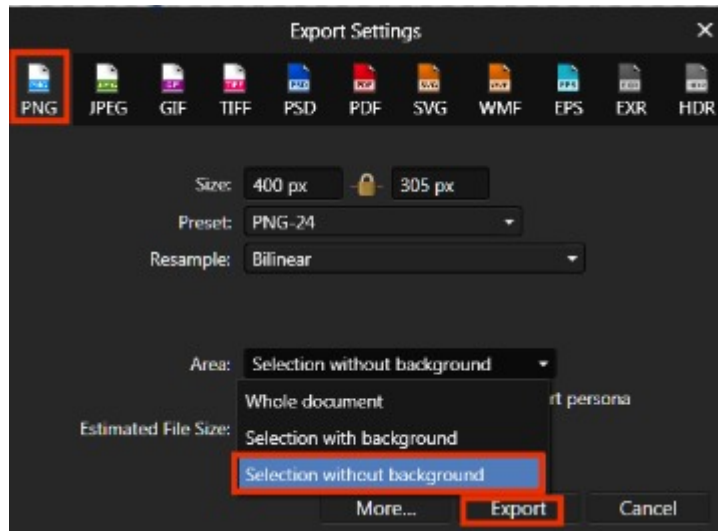
To make a clean image, **Edit/Copy**, then **Edit/Paste**. Next uncheck the layer you do not need or delete it.



Now you can deselect your image using **Ctrl+ D**.



To export your image as a png, make sure you have the top layer selected. This is your new clipart image. **File/Export** and use the below settings.



Hope you enjoyed this simple tutorial and enjoy creating clipart in Affinity Designer.

The clipart in the images below was created in Affinity Designer. The effects were created in the Draw Persona in Affinity Designer.



Visit my web page for more **Affinity Designer Tutorials by San!**

PIRCnet invites you to join the **PIRCForum**. This is an active forum for Affinity Designer for Windows users. You'll find a wonderful group of warm, friendly, talented, and knowledgeable people who are ready and willing to share their expertise with you. There are creative activities for all skill levels. This forum is "family friendly", 100% free, and everyone is welcome.